

# MARYVALE

## STRATEGIC PLAN 2017

Approved January 24, 2017

### ACADEMIC EXCELLENCE



*Provide a dynamic academic program that prepares young women to lead in our global and diverse world.*

- **Promote academic success for students in grades 6–12 by ensuring that curriculum development and implementation are research-based and reflect best practices.**
  - Employ an Academic Dean with experience in grades 6-12 education.
  - Establish a Professional Development Committee to guide continuing education.
  - Update and amplify each department's Course Scope and Sequence Statements in order to both challenge students and meet student needs.
  - Investigate the feasibility of certificate or endorsement programs.
- **Create a Learning Commons that includes state-of-the-art technology to support all facets of the academic program, including a digital media center and an innovative journalism program.**
- **Continue to increase emphasis in all areas of STEM (science, technology, engineering, and mathematics).**
  - Infuse STEM-related skills, behaviors, and dispositions in the Scope and Sequence of all content areas.
  - Increase Technology and Engineering personnel to support expanded STEM opportunities for students.
  - Assess STEM certification.
- **Continue the focus of the St. Julie Billiart Program as a center of excellence dedicated to empowering students with language-based learning differences to achieve success.**
  - Ensure that all Maryvale faculty, through ongoing professional development, are prepared to support students in the Julie program.
- **Enhance the Middle School music and arts curriculum.**
- **Continue and strengthen opportunities for internships and externships as well as explore the introduction of an independent or capstone study program for seniors.**
- **Continue support for and focus on college counseling with the goal of preparing / promoting student acceptance into top-tier colleges / universities and/ or the college / university of first choice commensurate with the student's demonstrated academic record.**



# MARYVALE STRATEGIC PLAN

## FAITH AND MISSION



*With grounding in the mission of the Sisters of Notre Dame de Namur (SND), provide students grades 6 through 12 with a unique and meaningful opportunity to impact the world through faith and service.*

---

- **Enhance opportunities for prayer and faith life.**
  - Explore ways to make the Castle chapel a campus center for prayer and reflection.
- **Build SND history and charism into the theology curriculum for all grades.**
- **Build upon the strong pillar of service by connecting service activities to the following:**
  - Mission and other SND schools
  - Community building within our school, other schools, and with our alumnae
  - Enhanced opportunities for service both internationally and domestically
  - Regularly assess impact through better measurement of current student and recent alumnae experience

## STUDENT LIFE

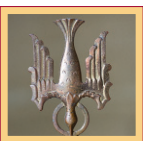


*Provide opportunities to pursue excellence in extra-curricular programs in athletics, arts, clubs and activities to support balance and encourage overall well-being.*

---

- **Strengthen and increase commitment to excellence in athletics for both Upper and Middle School student athletes with dedicated staff, recruitment and athletic scholarships.**
- **Strengthen and enhance age-appropriate physical education, fitness and wellness programs to address physical and mental well-being of all students.**
- **Build commitment to the arts through increased focus on talent recruitment, alumnae and community mentors, and “friends of the arts” giving.**
- **Explore partnerships with other institutions for extra-curricular activities.**

## SCHOOL CULTURE



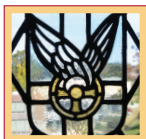
*Preserve the community that distinguishes Maryvale where each student “belongs from her first day;” treats others with respect; discovers her interests through experience; and has the opportunity to lead.*

---

- **Ensure all members of the community understand and are committed to The Maryvale Way through the tenets of respect, dignity and inclusivity, with a commitment to learning and experience.**
- **Instill pride and confidence in each student’s ability to lead because of her Maryvale education.**
- **Prepare young women to be global citizens who respect and seek diversity.**
- **Continue expansion of programs focusing on diversity and inclusivity for faculty, students and families.**

# MARYVALE STRATEGIC PLAN

## INNOVATIVE PROGRAMMING



*Create, develop and sustain Innovative Programming that provides Maryvale students with an unparalleled opportunity to develop their leadership potential, while fostering responsible citizenship.*

---

- **Expand the Leadership Institute programming across all grades.**
  - Implement a leadership professional development initiative for course instructors, advisors and administration.
  - Expand the Leadership Institute Speakers Series.
  - Create a career mentoring program.
  - Enhance and formalize corporate and nonprofit partnerships.
  - Build financial literacy into programs.
  - Extend leadership programming for alumnae with a focus on career building and transition.
- **Research possibilities for Living Classroom and other forms of outdoor education to maximize use of the campus.**
- **Establish campus-wide initiatives focused on environmental responsibility and sustainability.**
- **Foster expanded understanding of and commitment to global citizenship.**

## STEWARDSHIP OF RESOURCES



*Maintain and enhance the Maryvale educational experience through effective stewardship of resources.*

---

- **Prepare to launch a Campaign for Endowment, Facility and Program Enhancements that includes funds for both operations and traditional endowment, allowing for customized contribution opportunities.**
  - Conduct a feasibility study to refine goal and priorities.
- **Increase donor-funded sources for financial aid and scholarship to support Maryvale students.**
  - Create more opportunities for donors to support academic, athletic, service, leadership, and arts scholarships.
- **Conduct a Technology Needs Assessment to examine infrastructure and personnel needs across all functions and programs of the school and develop a long-term plan for technology personnel, equipment upgrades and new technology implementation.**
- **Maintain high-quality personnel — for faculty, staff and administration — through ongoing support for education, training, and special grant opportunities.**
- **Conduct an Enrollment Management Study to better understand Maryvale's position in the Baltimore independent and Catholic school marketplace, including an examination of tuition, student support, and enrollment.**